

ONE - BEAM - B70

$\frac{W}{F} \frac{13 \frac{11}{16} \times 5/16}{8" \times 1/2"}$

BILL OF MATERIAL

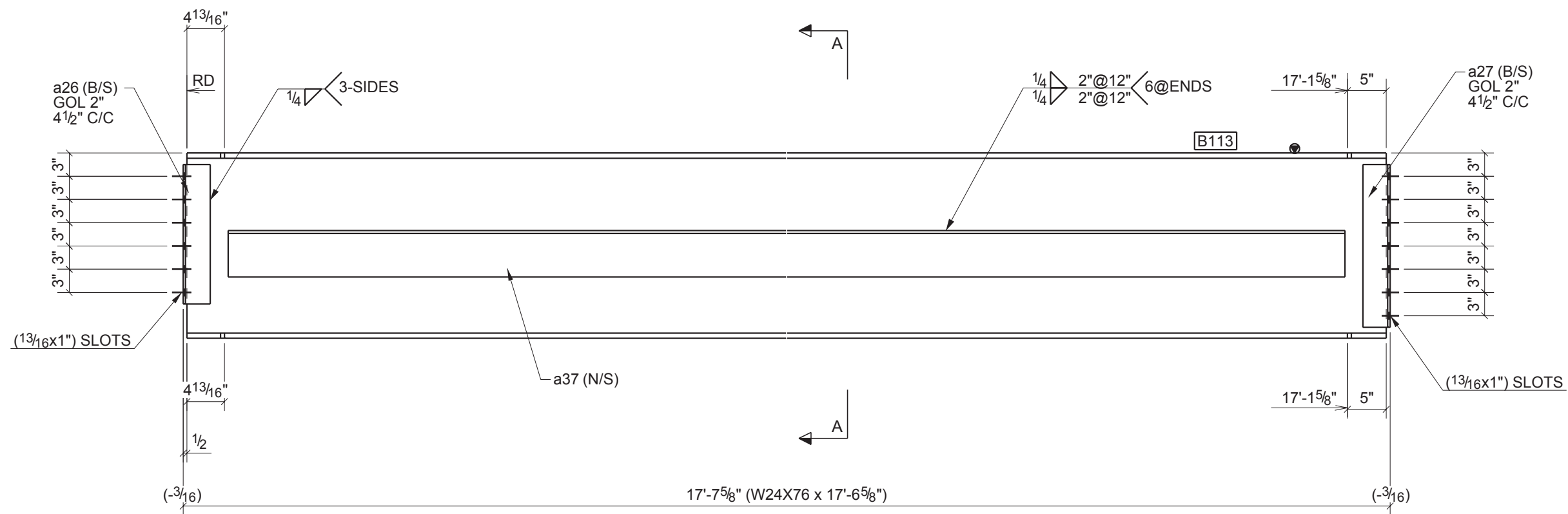
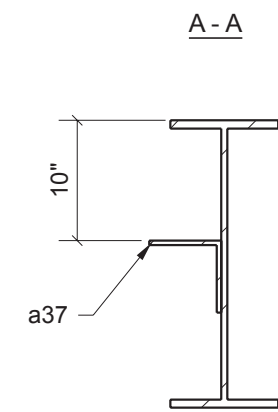
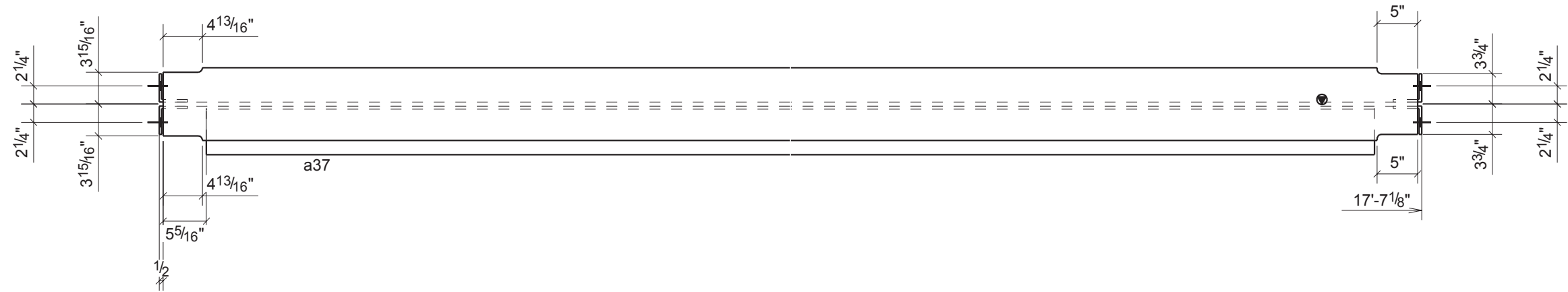
MARK	NO PCS	DESCRIPTION	LENGTH	PIECE MARK	REMARKS
B70	1	W14X43 C=3/4"	25'-2 13/16"		SQ-2 A992
	4	L4X4X5/16	0'-0'-9"	a17	A36

4	Per Arch/Eng Approval (04-15-08)	04/26/2008		
REV.	DESCRIPTION	DATE	DWN	CHK
GENERAL NOTES		JOB USE		
MATERIAL: A992, A500	ELECTRODES: E70XX	REF. DRG.		
HOLES: 13/16" DIA. U/N	CONN'S.: A325N 3/4" DIA BOLTS U/N	SHOP		
SURFACE PREP. for painting AND PAINT: see Arch. and Struct. Specs.		APPROVAL		
DESCRIPTION: BEAM				
PROJECT NAME CA23 CONDOMINIUMS				
LOCATION				
DRAWN BY:				
FAB. NAME		DRAWN BY	DATE	
		CHKD. BY	04/04/2008	
		JOB No.	DRG. No.	REV.
		ESG2907	B70	1



STEEL STRUCTURES ■ MODELING ■ DETAILING ■ ENGINEERING

50 East Palisade Ave. Suite 412 ■ Englewood, NJ 07631
office: 201.567.4072 ■ mobile: 201.660.2200 ■ fax: 201.567.4071



STEEL STRUCTURES ■ MODELING ■ DETAILING ■ ENGINEERING

50 East Palisade Ave. Suite 412 ■ Englewood, NJ 07631
 office: 201.567.4072 ■ mobile: 201.660.2200 ■ fax: 201.567.4071

ONE - BEAM - B113

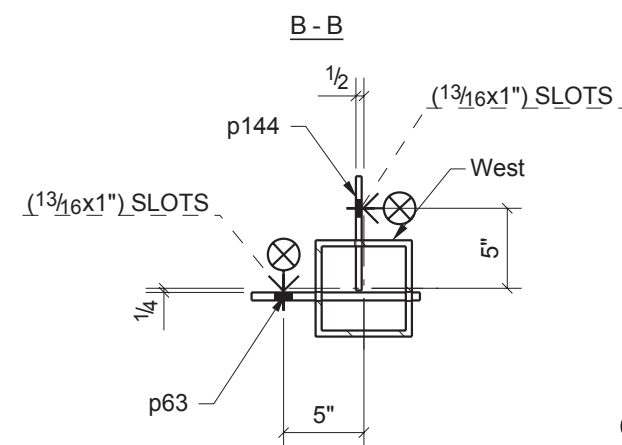
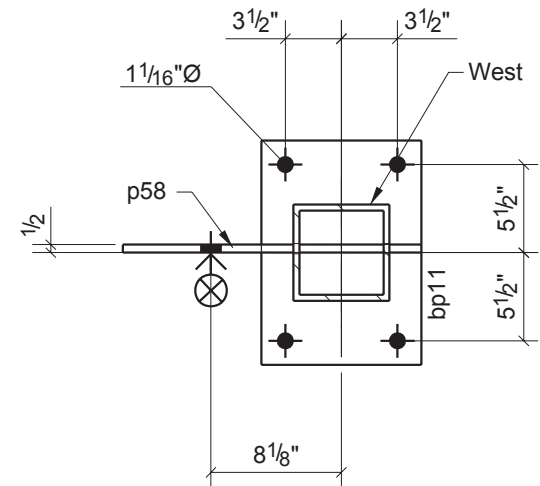
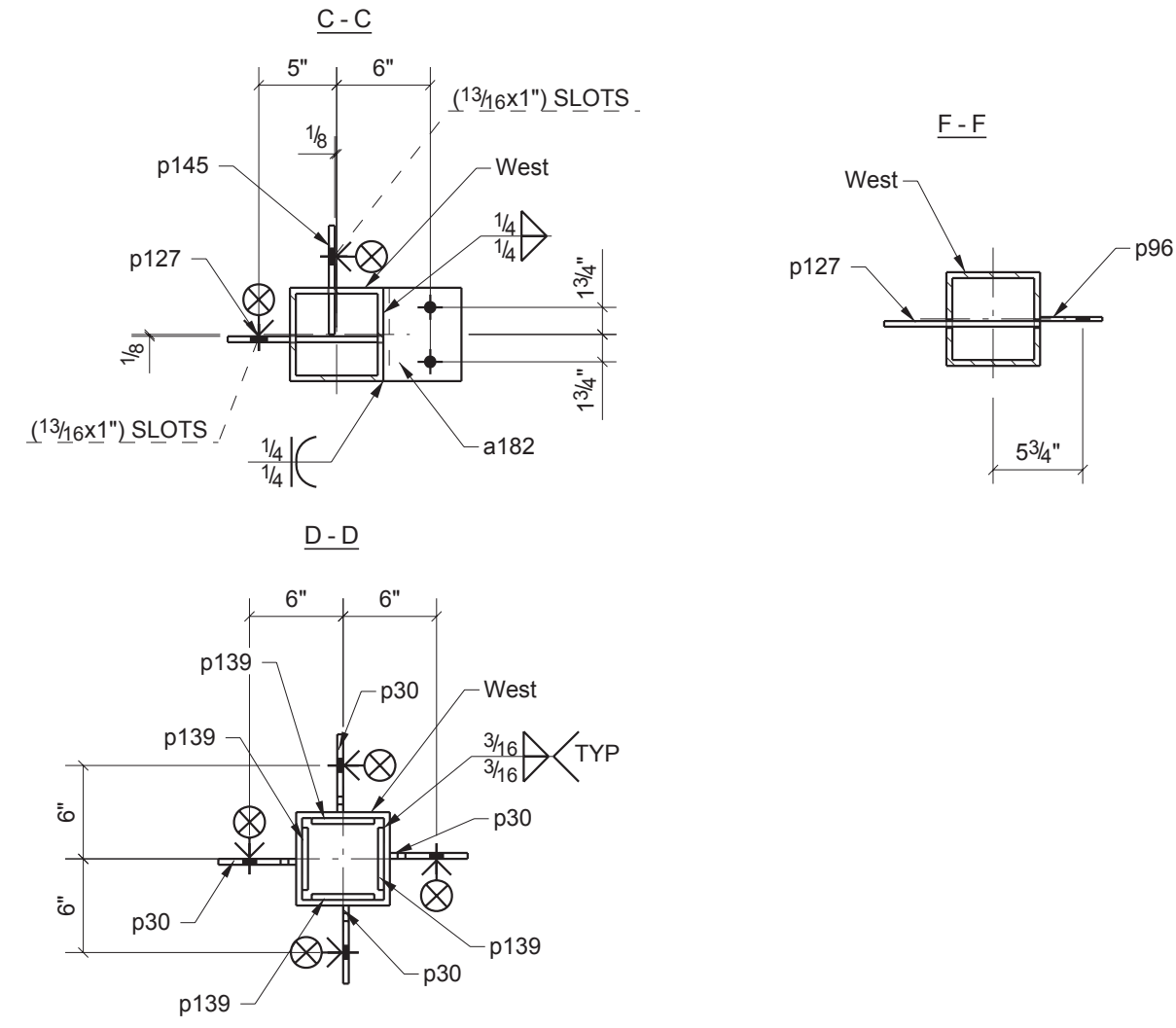
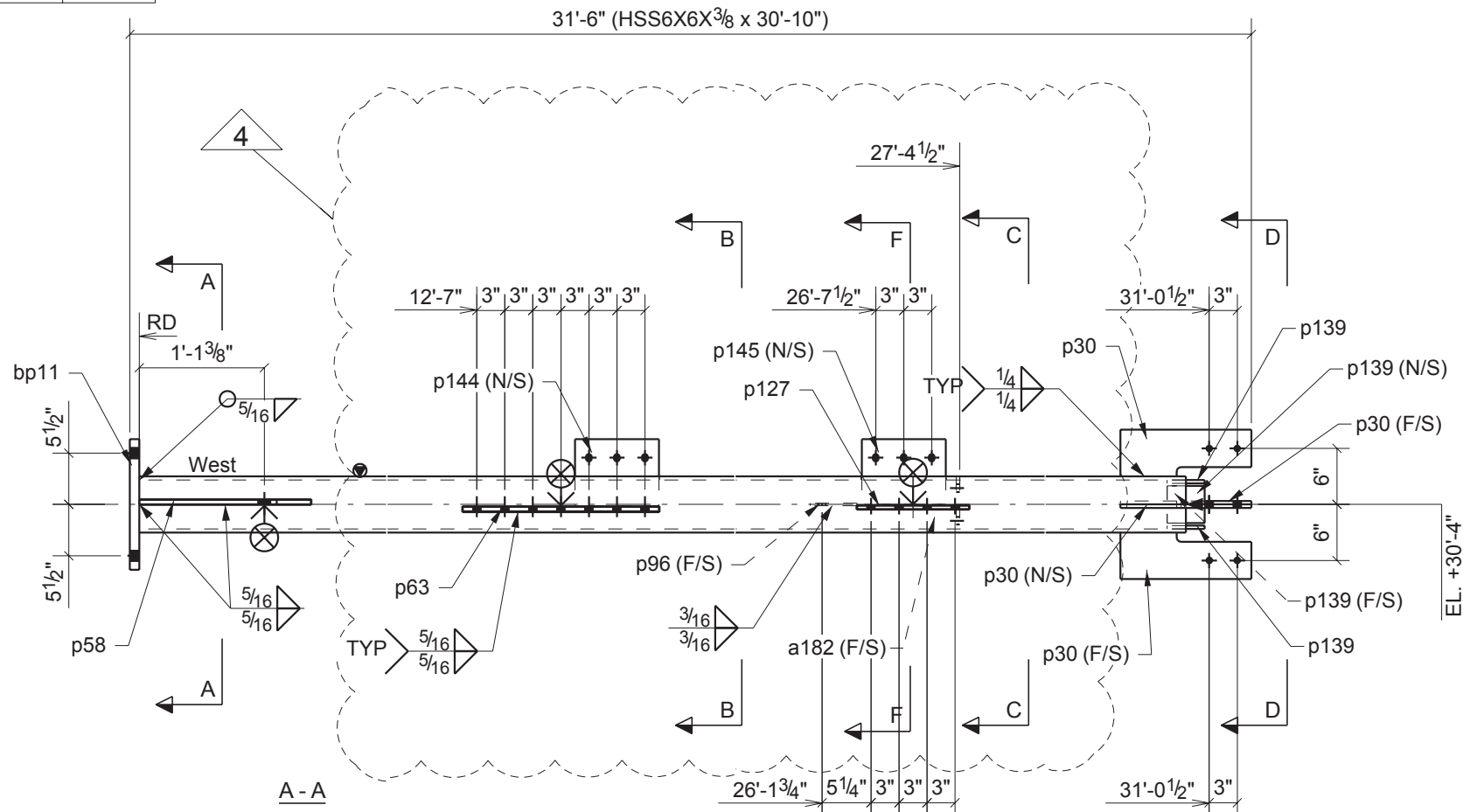
W 23 15/16 x 7/16
 F 9" x 11/16"

BILL OF MATERIAL

MARK	NO PCS	DESCRIPTION	LENGTH	PIECE MARK	REMARKS
B113	1	W24X76	17'-6 5/8"		SQ-2 A992
	2	L3-1/2X3-1/2X5/16	1'-6"	a26	A36
	2	L3-1/2X3-1/2X5/16	1'-9"	a27	A36
	1	L6X6X3/8	16'-8"	a37	A36

4	Per Arch/Eng Approval (04-15-08)	04/26/2008		
REV.	DESCRIPTION	DATE	DWN	CHK
GENERAL NOTES		JOB USE		
MATERIAL: A992, A500	ELECTRODES: E70XX	REF. DRG.		
HOLES: 13/16" DIA. U/N	CONN'S.: A325N 3/4" DIA BOLTS U/N	SHOP		
SURFACE PREP. for painting AND PAINT: see Arch. and Struct. Specs.		APPROVAL		
DESCRIPTION: BEAM				
PROJECT NAME CA23 CONDOMINIUMS				
LOCATION				
DRAWN BY:				
FAB. NAME		DRAWN BY	DATE	
		CHKD. BY	DATE	
		JOB No. ESG2907	DRG. No. B113	REV. 1

GRID LOCATION	BOTTOM ELEVATION
3.9/F.2	-7"



ONE - COLUMN - C210

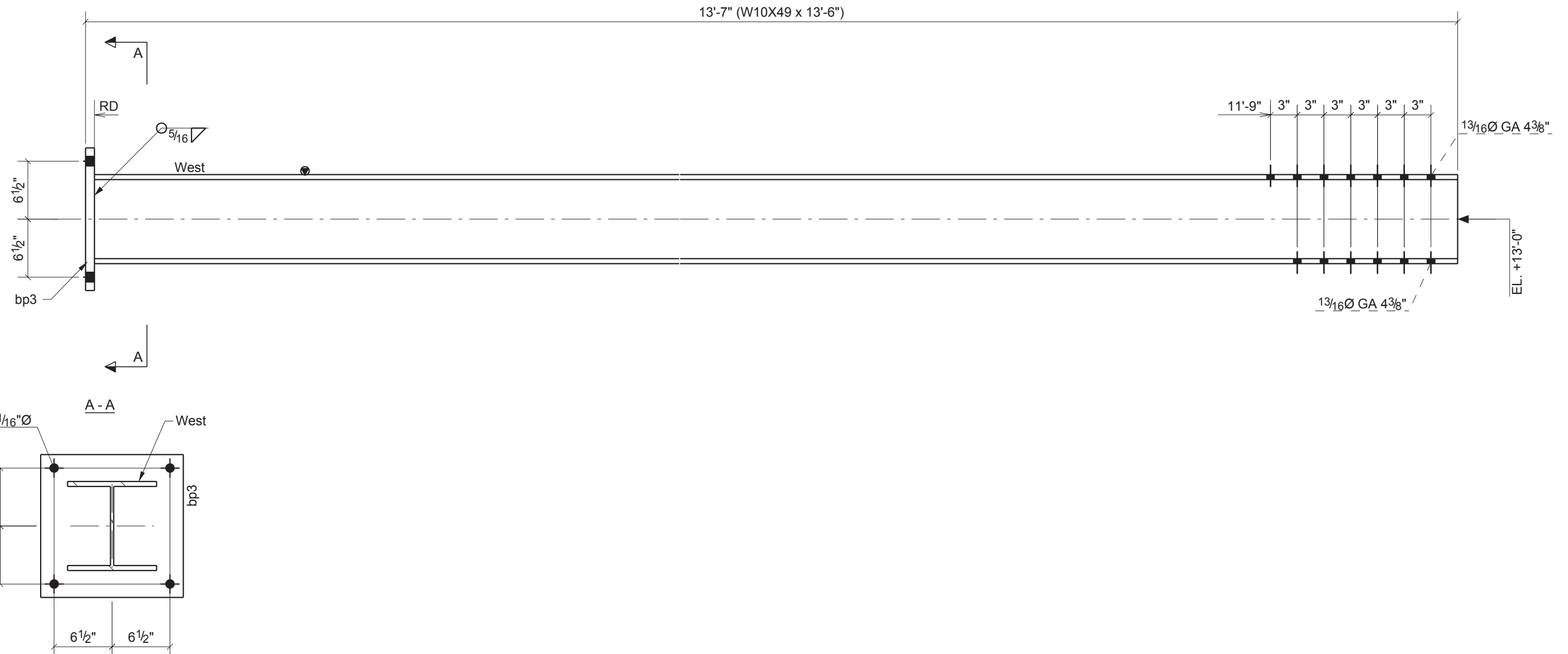


50 East Palisade Ave. Suite 412 ■ Englewood, NJ 07631
office: 201.567.4072 ■ mobile: 201.660.2200 ■ fax: 201.567.4071

BILL OF MATERIAL					
MARK	NO PCS	DESCRIPTION	LENGTH	PIECE MARK	REMARKS
C210	1	HSS6X6X3/8	30'-10"		SQ-2 A500-GR.B
	1	L5X5X3/8	0'-0'-6"	a182	A36
	1	FL1"X10"	1'-2"	bp11	A36
	4	FL3/8"X5"	1'-2"	p30	A36
	1	PL1/2"X18 3/8"	1'-6 5/8"	p58	A36
	1	FL1/2"X10 1/2"	1'-9"	p63	A36
	1	FL1/4"X4"	0'-0'-5"	p96	A36
	1	FL3/8"X10"	1'-0"	p127	A36
	4	FL3/8"X4"	0'-0'-4"	p139	A36
	1	FL3/8"X9"	0'-0'-7 1/8"	p144	A36
	1	FL3/8"X7"	0'-0'-9"	p145	A36

4	Per Arch/Eng Approval (04-15-08)	04/26/2008		
REV.	DESCRIPTION	DATE	DWN	CHK
GENERAL NOTES		JOB USE		
MATERIAL: A992, A500		ELECTRODES: E70XX		REF. DRG.
HOLES: 13/16" DIA. U/N		CONN'S.: A325N 3/4" DIA BOLTS U/N		
SURFACE PREP. for painting AND PAINT: see Arch. and Struct. Specs.		APPROVAL		
DESCRIPTION: COLUMN		PROJECT NAME CA23 CONDOMINIUMS		
LOCATION		DRAWN BY:		
FAB. NAME		DRAWN BY ESG	DATE 03/31/2008	
		CHKD. BY AM	DATE	
		JOB No. ESG2907	DRG. No. C210	REV. 1

GRID LOCATION	BOTTOM ELEVATION
9/G	-7"



STEEL STRUCTURES ■ MODELING ■ DETAILING ■ ENGINEERING

50 East Palisade Ave. Suite 412 ■ Englewood, NJ 07631
 office: 201.567.4072 ■ mobile: 201.660.2200 ■ fax: 201.567.4071

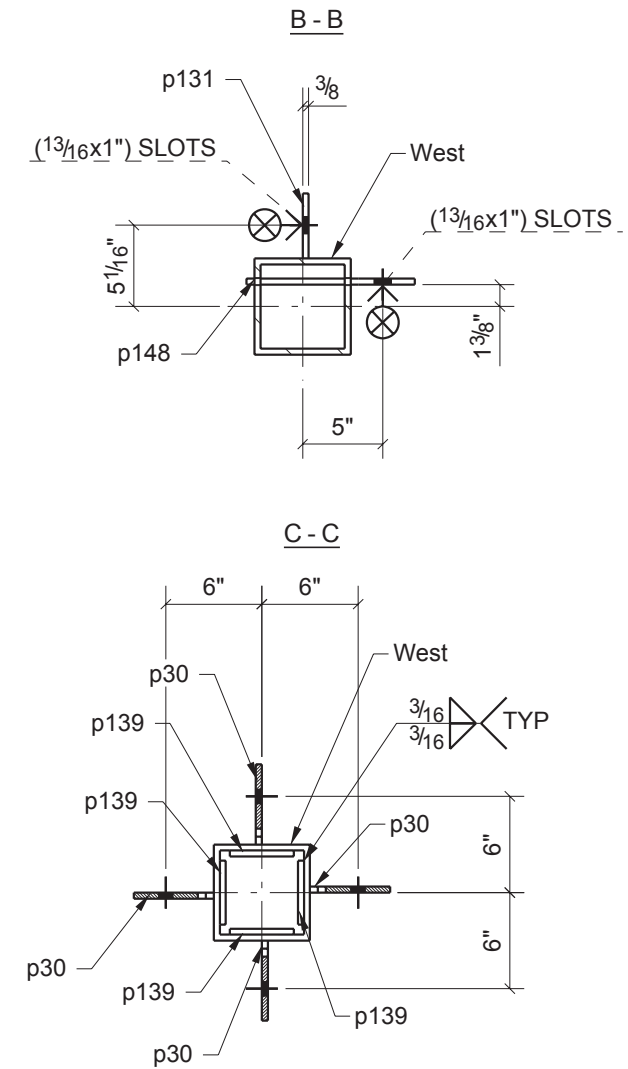
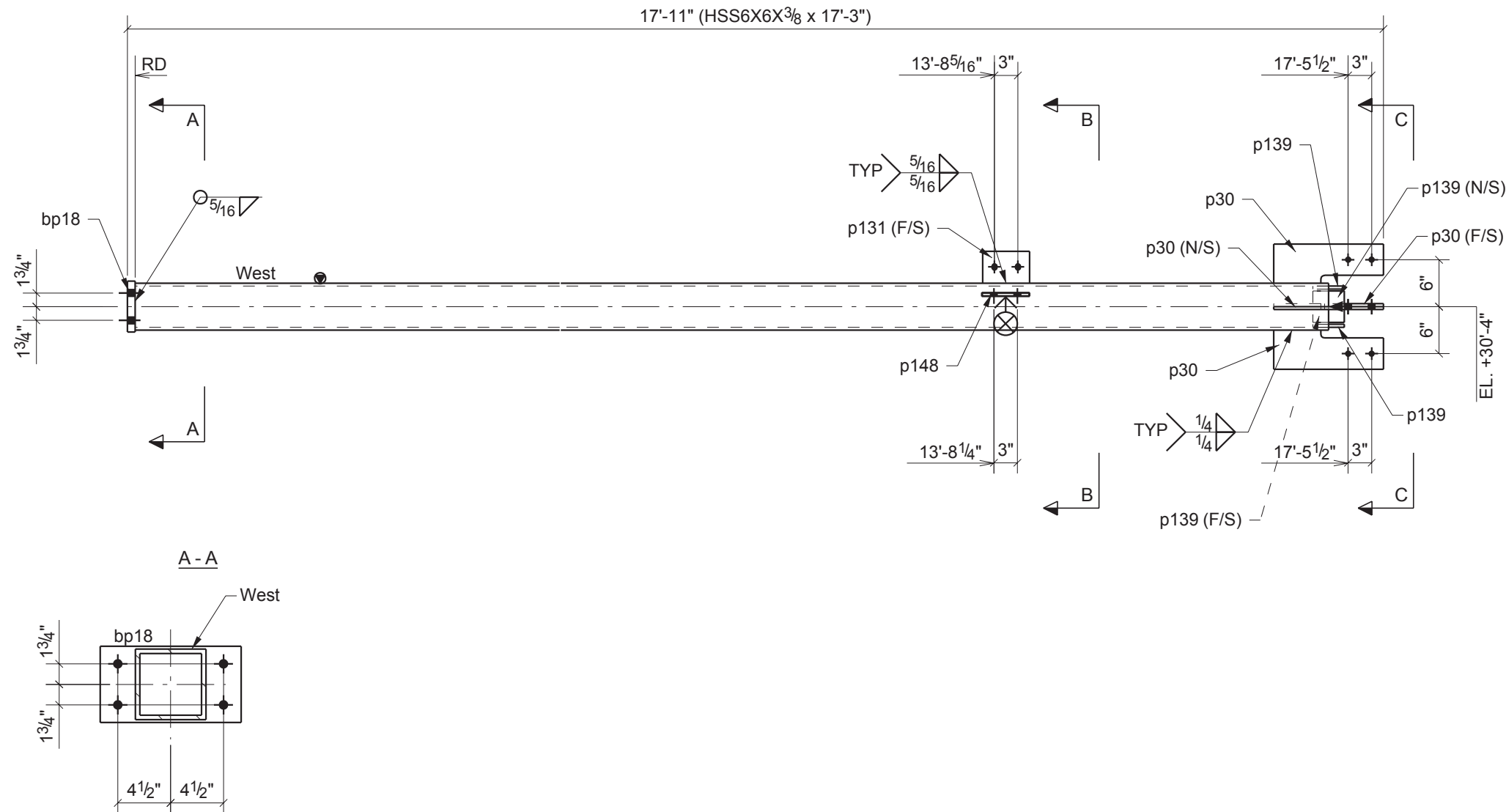
ONE - COLUMN - C40

$\frac{W}{F} \frac{10'' \times 5/16}{10'' \times 9/16''}$

BILL OF MATERIAL					
MARK	NO PCS	DESCRIPTION	LENGTH	PIECE MARK	REMARKS
C40	1	W10X49	13'-6"		SQ-2 A992
	1	PL1"X16"	1'-4"	bp3	A36

4	Per Arch/Eng Approval (04-15-08)	04/26/2008		
REV.	DESCRIPTION	DATE	DWN	CHK
GENERAL NOTES		JOB USE		
MATERIAL: A992, A500	ELECTRODES: E70XX	REF. DRG.		
HOLES: 13/16" DIA. U/N	CONN'S.: A325N 3/4" DIA BOLTS U/N	SHOP		
SURFACE PREP. for painting AND PAINT: see Arch. and Struct. Specs.		APPROVAL		
DESCRIPTION: COLUMN				
PROJECT NAME CA23 CONDOMINIUMS				
LOCATION				
DRAWN BY:				
FAB. NAME		DRAWN BY	DATE	
		CHKD. BY	03/31/2008	
		JOB No.	DRG. No.	REV.
		ESG2907	C40	1

GRID LOCATION	BOTTOM ELEVATION
7.3/A	13'-0"



STEEL STRUCTURES ■ MODELING ■ DETAILING ■ ENGINEERING

50 East Palisade Ave. Suite 412 ■ Englewood, NJ 07631
 office: 201.567.4072 ■ mobile: 201.660.2200 ■ fax: 201.567.4071

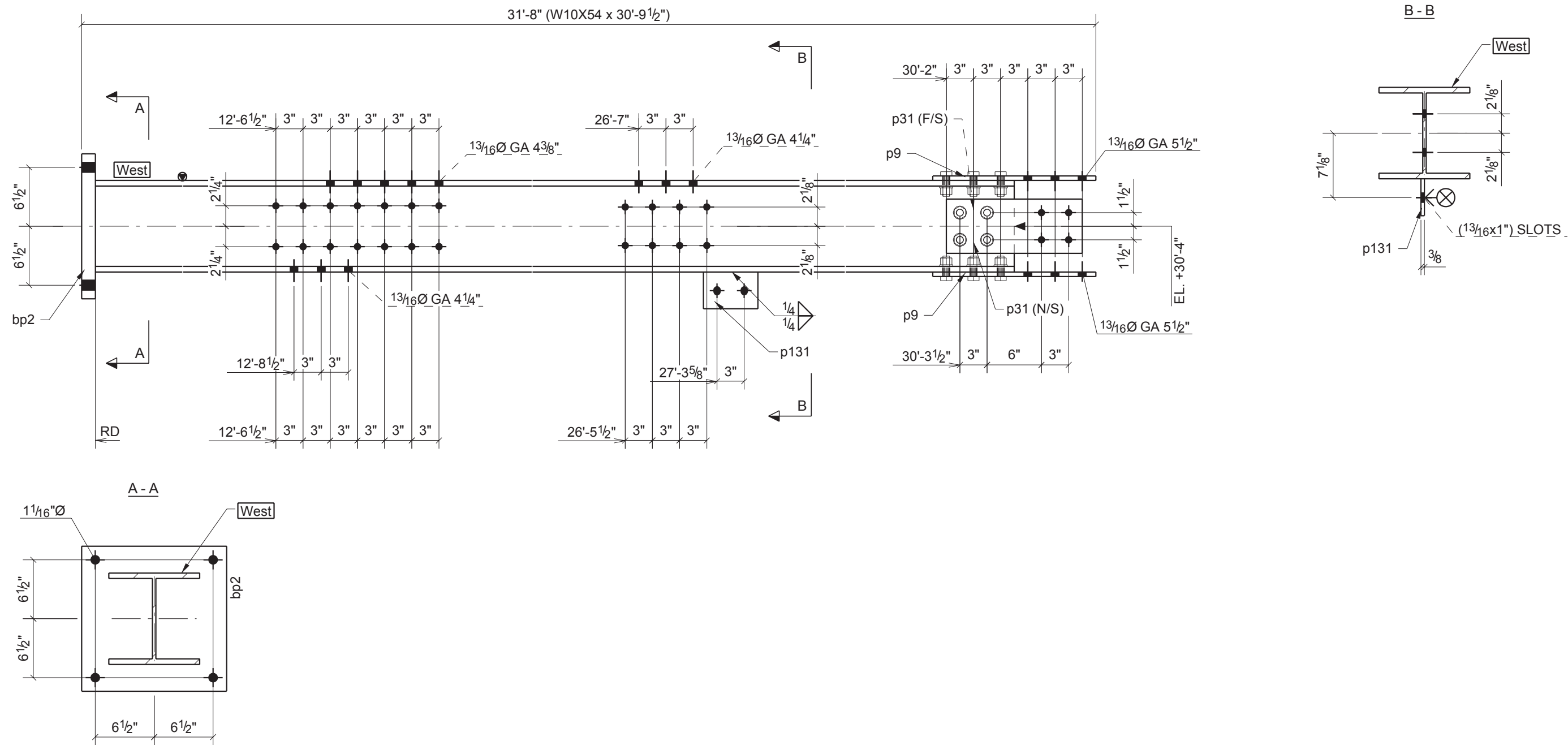
ONE - COLUMN - C47

BILL OF MATERIAL

MARK	NO PCS	DESCRIPTION	LENGTH	PIECE MARK	REMARKS
C47	1	HSS6X6X3/8	17'-3"		SQ-2 A500-GR.B
	1	FL1"X6 1/2"	1'-0"	bp18	A36
	4	FL3/8"X5"	1'-2"	p30	A36
	1	FL3/8"X6"	0'-0"-4 1/16"	p131	A36
	4	FL3/8"X4"	0'-0"-4"	p139	A36
	1	FL3/8"X6"	0'-0"-10 1/2"	p148	A36

4	Per Arch/Eng Approval (04-15-08)	04/26/2008		
REV.	DESCRIPTION	DATE	DWN	CHK
GENERAL NOTES		JOB USE		
MATERIAL: A992, A500	ELECTRODES: E70XX	REF. DRG.		
HOLES: 13/16" DIA. U/N	CONN'S.: A325N 3/4" DIA BOLTS U/N	SHOP		
SURFACE PREP. for painting AND PAINT: see Arch. and Struct. Specs.		APPROVAL		
DESCRIPTION: COLUMN				
PROJECT NAME CA23 CONDOMINIUMS				
LOCATION				
DRAWN BY:				
FAB. NAME		DRAWN BY ESG	DATE 04/09/2008	
		CHKD. BY AM	DATE	
JOB No. ESG2907	DRG. No. C47	REV. 1		

GRID LOCATION	BOTTOM ELEVATION
7/G	-7"



ONE - COLUMN - C8

W 10 1/16" x 3/8
F 10" x 5/8"

BILL OF MATERIAL

MARK	NO PCS	DESCRIPTION	LENGTH	PIECE MARK	REMARKS
C8	1	W10X54	30'-9 1/2"		SQ-2 A992
	1	PL 1/2"X16"	1'-4"	bp2	A36
	2	FL 1/2"X10"	1'-6"	p9	A36
	2	FL 5/16"X6"	1'-3"	p31	A36
	1	FL 3/8"X6"	0'-0"-4 1/16"	p131	A36
	6	3/4"Ø A325N BOLT	0'-2 1/4"		
	6	3/4"Ø A325N BOLT	0'-2 1/4"		
	4	3/4"Ø A325N BOLT	0'-2 1/4"		

4	Per Arch/Eng Approval (04-15-08)	04/26/2008		
REV.	DESCRIPTION	DATE	DWN	CHK
GENERAL NOTES		JOB USE		
MATERIAL: A992, A500		ELECTRODES: E70XX		REF. DRG.
HOLES: 13/16" DIA. U/N		CONN'S.: A325N 3/4" DIA BOLTS U/N		SHOP
SURFACE PREP. for painting		APPROVAL		
AND PAINT: see Arch. and Struct. Specs.				
DESCRIPTION: COLUMN				
PROJECT NAME CA23 CONDOMINIUMS				
LOCATION				
DRAWN BY:		FAB. NAME		
		DRAWN BY	DATE	
		CHKD. BY	DATE	
		JOB No. ESG2907	DRG. No. C8	REV. 1



STEEL STRUCTURES ■ MODELING ■ DETAILING ■ ENGINEERING

50 East Palisade Ave. Suite 412 ■ Englewood, NJ 07631
office: 201.567.4072 ■ mobile: 201.660.2200 ■ fax: 201.567.4071