

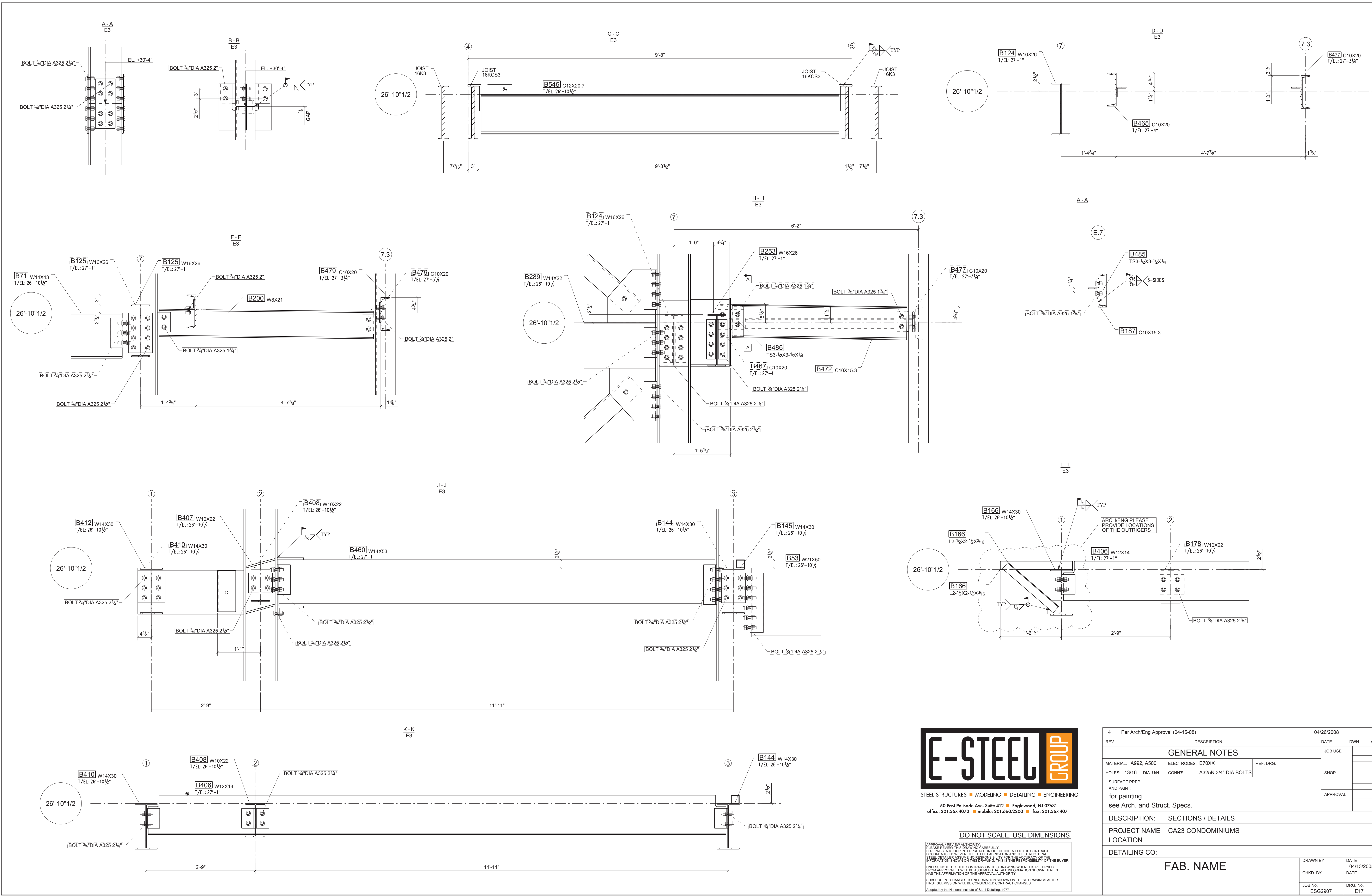
DO NOT SCALE, USE DIMENSIONS

APPROVAL / REVIEW AUTHORITY: PLEASE REVIEW THIS DRAWING CAREFULLY. IT REPRESENTS OUR INTERPRETATION OF THE INTENT OF THE CONTRACT DOCUMENTS. HOWEVER, THE STEEL FABRICATOR AND THE STRUCTURAL STEEL DETAILER ASSUME NO RESPONSIBILITY FOR THE ACCURACY OF THE INFORMATION SHOWN ON THIS DRAWING. THIS IS THE RESPONSIBILITY OF THE BUYER. UNLESS NOTED TO THE CONTRARY ON THIS DRAWING WHEN IT IS RETURNED FROM APPROVAL, IT WILL BE ASSUMED THAT ALL INFORMATION SHOWN HEREIN HAS THE AFFIRMATION OF THE APPROVAL AUTHORITY. SUBSEQUENT CHANGES TO INFORMATION SHOWN ON THESE DRAWINGS AFTER FIRST SUBMISSION WILL BE CONSIDERED CONTRACT CHANGES.
Adapted by the National Institute of Steel Detailing, 1977



STEEL STRUCTURES • MODELING • DETAILING • ENGINEERING
50 East Palisade Ave., Suite 412 • Englewood, NJ 07631
office: 201.567.4072 • mobile: 201.660.2200 • fax: 201.567.4071

4	Per Arch/Eng Approval (04-15-08)	04/26/2008			
REV.	DESCRIPTION	DATE	DWN	CHK	JOB USE
GENERAL NOTES					
MATERIAL: A992, A500	ELECTRODES: E70XX	REF. DRG.			SHOP
HOLES: 13/16 DIA UNL	CONN'S: A325N 3/4" DIA BOLTS				APPROVAL
SURFACE PREP. AND PAINT: for painting see Arch. and Struct. Specs.					
DESCRIPTION: PLAN @ 3rd FLOOR FRAMING - WEST					
PROJECT NAME CA23 CONDOMINIUMS					
LOCATION					
DETAILING CO: FAB. NAME					
DRAWN BY: ESG	DATE: 04/06/2008				
CHKD BY: PO	DATE:				
JOB No: ESG2907	DRG No: E3	REV: 4			



STEEL STRUCTURES ■ MODELING ■ DETAILING ■ ENGINEERING
 50 East Palisade Ave. Suite 412 ■ Englewood, NJ 07631
 office: 201.567.4072 ■ mobile: 201.660.2200 ■ fax: 201.567.4071

DO NOT SCALE, USE DIMENSIONS

APPROVAL / REVIEW AUTHORITY: PLEASE REVIEW THIS DRAWING CAREFULLY. I REPRESENT MY OWN KNOWLEDGE AND THE INTENT OF THE CONTRACT DOCUMENTS. HOWEVER, THE STEEL FABRICATOR AND THE STRUCTURAL STEEL DETAILER ASSUME NO RESPONSIBILITY FOR THE ACCURACY OF THE INFORMATION SHOWN ON THIS DRAWING. THIS IS THE RESPONSIBILITY OF THE BUYER. UNLESS NOTED TO THE CONTRARY ON THIS DRAWING WHEN IT IS RETURNED FROM APPROVAL, IT WILL BE ASSUMED THAT ALL INFORMATION SHOWN HEREIN HAS THE AFFIRMATION OF THE APPROVAL AUTHORITY. SUBSEQUENT CHANGES TO INFORMATION SHOWN ON THESE DRAWINGS AFTER FIRST SUBMISSION WILL BE CONSIDERED CONTRACT CHANGES. Adopted by the National Institute of Steel Detailing, 1977.

4	Per Arch/Eng Approval (04-15-08)	04/26/2008		
REV.	DESCRIPTION	DATE	DWN	CHK
GENERAL NOTES				
MATERIAL: A992, A500		ELECTRODES: E70XX	REF. DRG.	
HOLES: 13/16 DIA. UN		CONN'S: A325N 3/4" DIA BOLTS	JOB USE	
SURFACE PREP. AND PAINT:		SHOP		
for painting see Arch. and Struct. Specs.		APPROVAL		
DESCRIPTION: SECTIONS / DETAILS				
PROJECT NAME CA23 CONDOMINIUMS				
LOCATION				
DETAILING CO:				
FAB. NAME		DRAWN BY	DATE	
		CHKD. BY	DATE	
JOB No.	DRG. No.	REV.		
ESG2907	E17	4		